

30815.x - 03975 Voice control with 2 push buttons and actuator

Alexa built-in voice control device with built-in Wi-Fi, two front buttons, RGB LED backlighting, 1 input for wired push button, 1 relay output for local or remote control, designed for use on View Wireless mesh system thanks to IoT technology on Bluetooth technology 5.0 standard and on By-me Plus system thanks to the By-me bus - 3 modules.

THREE OPERATING MODES (ALTERNATIVE)

Stand alone • View Wireless System • By-me Plus System

	Stand alone	View Wireless System	By-me Plus System
Front buttons	Relay ON-OFF control. Configuration with View App.	Relay ON-OFF control. Configuration with View Wireless App and management from View App.	Freely configurable with the View Pro App. Management from View App.
Relay	It is controlled from the front buttons and from the remote wired push button.	It is controlled from the front buttons and from the remote push button.	Freely configurable with the View Pro App.
Remote push button	Relay ON-OFF control.	Relay ON-OFF control or scenario activation.	Freely configurable with the View Pro App.

Download the View App from the stores onto the tablet/smartphone you will be using for configuration.

Depending on the mode you select, you will also need:

Stand alone	View Wireless System	By-me Plus System
Nothing else	Gateway art. 30807.x-20597 19597-16497-14597 App for configuration in the system	Home automation system gateway art. 01410 or 01411 App for configuration in the system

IMPORTANT: In View Wireless and By-me Plus systems, relays, buttons and push buttons should always be configured first. Subsequently, the voice control should be configured using the View App.

CONFIGURATION IN THE VIEW WIRELESS SYSTEM

- Create your Installer account on MyVimar (on-line).
- Wire all the devices in the system (2-way switches, relays, thermostats, gateway, etc.).
- Start the View Wireless App and log in with the credentials you just created.
- Create the system and the environments.
- Associate all the devices with the environments, except for the gateway (which should be associated last).
To associate the device 30815.x-03975 in order to manage its relay output:
 - Select "Add" (), choose the environment to place it and give it a name
 - Select ; activate the Bluetooth connection on your tablet/smartphone and approach the device
 - Simultaneously press button G followed by button E for 5 s; set the function of the relay, the parameters and any wired control with the related function.
- For every connected device, set the function, the parameters and any accessory devices (wired or radio control and related function).
- Transfer the configuration of the devices to the gateway and connect it to the Wi-Fi network.
- Transfer the system to the Administrator user (who must have created his/her profile on MyVimar).

For details please refer to the View Wireless App manual you can download from www.vimar.com = DOWNLOAD = APP MOBILE = View Wireless

CONFIGURATION IN THE BY-ME PLUS SYSTEM

- Create your Installer account on MyVimar (on-line).
- Wire all devices in the system (gateway, touch screen, relay, thermostats, etc.).
- Start the View Pro App and log in with the credentials you just created.
- Create the system and enrol the gateways and touch screens
- Create the environments, enrol the devices and create the applications.
To enrol the device 30815.x-03975 in order to manage its two front buttons and its relay output:
 - Choose the environment in which to place it and select
 - Select "START" and simultaneously press button G followed briefly by D
- For each device, set the functions and parameters
- Transfer the system to the Administrator user (who must have created his/her profile on MyVimar).

For details, please refer to the manuals for the VIEW IoT Smart System platform and the By-me Plus system you can download from www.vimar.com = DOWNLOAD = APP MOBILE = View Pro

VOICE CONTROL CONFIGURATION

- Create your Administrator account on MyVimar (on-line).
- Wire the voice controls and any wired push buttons
- Start the View App and log in with the credentials you just created.
- To associate the voice control:
 - For the Stand alone mode only, select "Create smart ecosystem" and give it a name
 - Activate the Bluetooth connection and geolocation on your tablet/smartphone
 - For the Stand alone mode, select the ecosystem you just created using = "Settings" = "SMART devices" = "Add" ()
 - For integration with View Wireless system, select the system = "Settings" = "Smart devices" = "Add" ()
 - For integration with By-me Plus system, select the system = "Settings" = "Integrations" = "Add" ()
 - Press button G for 5 s
 - Press "Start" and follow the instructions of the configuration wizard
- Create your Amazon account (or use the one you already have) and log in.
- Activate the Vimar Skill in the Alexa App and control the device by voice.

Functions supported
Amazon Music Streaming and TuneIn
Kindle
Basic conversation
Multi-turn conversation
Announce

For details please refer to the View App manual you can download from www.vimar.com = DOWNLOAD = APP MOBILE = View

CONTROLLABLE LOADS

Loads				
100 V~	250 W	50 W	60 W	125 VA
240 V~	500 W	100 W	120 W	250 VA

RESTART, RESET AND RESTORE TO FACTORY SETTINGS

	Stand alone	View Wireless System	By-me Plus System
Restart the device	Press button B for 30 s		
Resetting the Wi-Fi configuration and Alexa	Press button G for 30 s		
Restore to factory settings	Concurrently with resetting the Wi-Fi configuration and Alexa	Within the first 5 minutes of powering the device, press buttons G and E simultaneously for 30 s	After resetting the device from the View Pro App, press buttons G and C simultaneously.

When the operation is complete, the illuminated ring is turned off.

INSTALLATION RULES

- Installation and configuration must be carried out by qualified persons in compliance with the current regulations regarding the installation of electrical equipment in the country where the products are installed.
- The device must be installed in flush mounting boxes or surface mounting boxes with Linea, Eikon, Arkè, Idea (with dedicated mounting frame 16723) and Plana mounting frames and cover plates.
- The device should only be installed horizontally at a height of between 0.8 and 1.6 m from floor level.
- To ensure correct device operation do not install it near any obstacles.
- The relay output power circuit must be protected against overloads by installing a device, fuse or automatic 1-way switch, with a rated current not exceeding 10 A.

CHARACTERISTICS

- Rated supply voltage: 100-240 V~, 50/60 Hz.
- Maximum consumption: 2 W
- RF transmission power: < 100mW (20dBm).
- Frequency range: 2400-2483.5 MHz.
- Switching on zero crossing
- Terminals:
 - 2 terminals (L and N) for line and neutral
 - 1 terminal (P) for connection to the remote wired push button (for instance art. 30008.x-20008-19008-16080-14008). The max distance between the IoT device and the push button is 50 m with a cable with a minimum cross-section of 1.5 mm².
 - 1 terminal (1) for the relay output in voltage NO 100-240 V 50/60 Hz

30815.x - 03975 Voice control with 2 push buttons and actuator

- The radio control 03925 cannot be used as an accessory device for the voice assistant
- 4 front buttons delimited by an illuminated ring which, depending on the colour, identifies the statuses of the vocal function
- 2 front buttons fitted with RGB LEDs with configurable colour
- Absorption from the bus (when used in the By-me Plus system): 1 mA
- Max number of devices 03975 that can be connected in the By-me Plus system: see para. "System restrictions" in the VIEW IoT Smart System platform manual
- Operating temperature: -5 ÷ +45 °C (indoor)
- Protection degree: IP20

OPERATION

Stand alone

In this case, the 2 front buttons with RGB LED (colour configurable from the View App) and any remote push button control the relay. Configuration of the device (Wi-Fi credentials and connection to the Amazon account) is carried out from the View App. Once Alexa is up and running and the Vimar skills have been enabled, the relay can be voice operated. The relay can also be controlled from the Google Home App, from the respective voice assistant.

View Wireless System

In this case the 2 front buttons with RGB LED (colour configurable from the View Wireless App) control the relay, while the remote wired push button can be configured to control the relay or activate a scenario. Limited to the push buttons and relay, the device can also operate in the absence of Wi-Fi connectivity. Configuration of the device in the system is carried out from the View Wireless App. Configuration (Wi-Fi credentials and connection to the Amazon account) is carried out from the View App. Once Alexa is up and running and the Vimar skills have been enabled, the connected system can be voice operated. The system can also be controlled from the Google Home App, from the respective voice assistant and from Siri.

By-me Plus System

In this case, the 2 front buttons with RGB LED (colour configurable from the View App), any remote wired push button and the relay can be used within applications and scenarios. Limited to the push buttons and relay, the device can also operate in the absence of Wi-Fi connectivity. Configuration of the device in the system is carried out from the View Pro App. Configuration (Wi-Fi credentials and connection to the Amazon account) is carried out from the View App. Once Alexa is up and running and the Vimar skills have been enabled, the home automation system can be voice operated. The system can also be controlled from the Google Home App, from the respective voice assistant and from Siri.


REGULATORY COMPLIANCE.

RED Directive. RoHS directive.

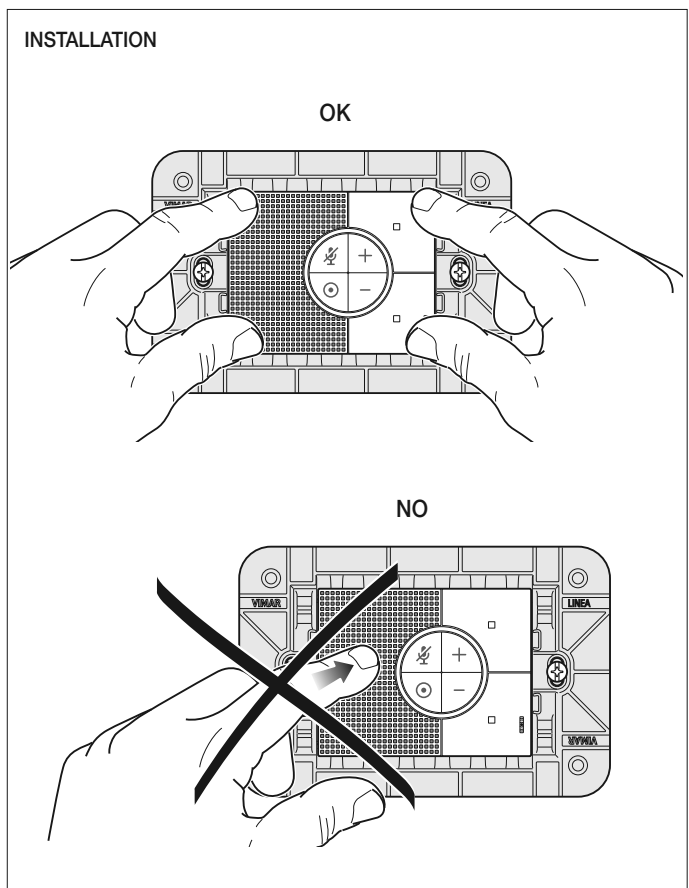
EN IEC 60669-2-1, EN IEC 63044, EN 50491, EN 300 328, EN 301 489-17, EN IEC 62311, EN IEC 63000, EN55032, EN 55035, EN IEC 61000-3-2, EN 61000-3-3 standards.

Vimar SpA declares that the radio equipment complies with Directive 2014/53/EU. The full text of the EU declaration of conformity is on the product sheet available on the following website: www.vimar.com.

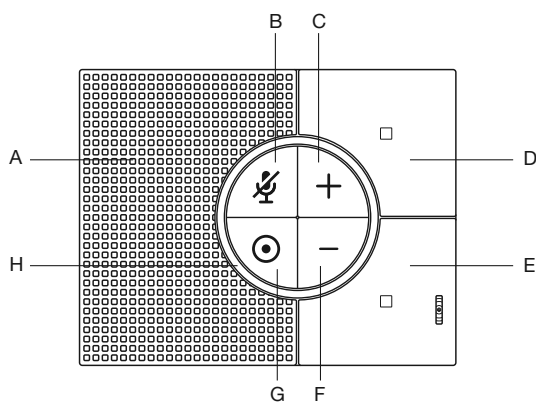
REACH (EU) Regulation no. 1907/2006 – Art.33. The product may contain traces of lead.

 **WEEE - User information**
 The crossed bin symbol on the appliance or on its packaging indicates that the product at the end of its life must be collected separately from other waste. The user must therefore hand the equipment at the end of its life cycle over to the appropriate municipal centres for the differentiated collection of electrical and electronic waste. As an alternative to independent management, you can deliver the equipment you want to dispose of free of charge to the distributor when purchasing a new appliance of an equivalent type. You can also deliver electronic products to be disposed of that are smaller than 25 cm for free, with no obligation to purchase, to electronics distributors with a sales area of at least 400 m². Proper sorted waste collection for subsequent recycling, processing and environmentally conscious disposal of the old equipment helps to prevent any possible negative impact on the environment and human health while promoting the practice of reusing and/or recycling materials used in manufacture.

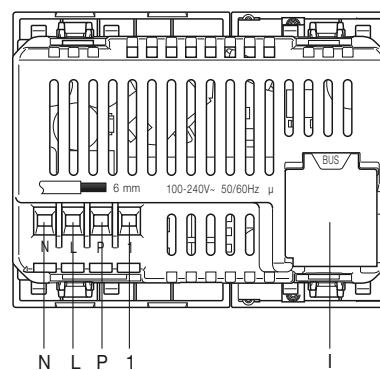
The Apple, iPhone and iPad logos are trademarks of Apple Inc., registered in the United States and in other Countries and Regions. App Store is a service trademark of Apple Inc. Google is a trademark of Google LLC. Amazon, Alexa and all related logos are trademarks of Amazon.com, Inc. or its affiliates.



FRONT VIEW



REAR



A	Speaker
B	Microphone ON/OFF
C	Volume up
D	Relay ON button in Stand alone operation and View Wireless System Configurable button for By-me Plus System
E	Relay OFF button in Stand alone operation and View Wireless System Configurable button for By-me Plus System
F	Volume up down
G	Button that manually activates Alexa to give a vocal control directly
H	Illuminated ring (for the meaning of the LED colour, see the View App manual)

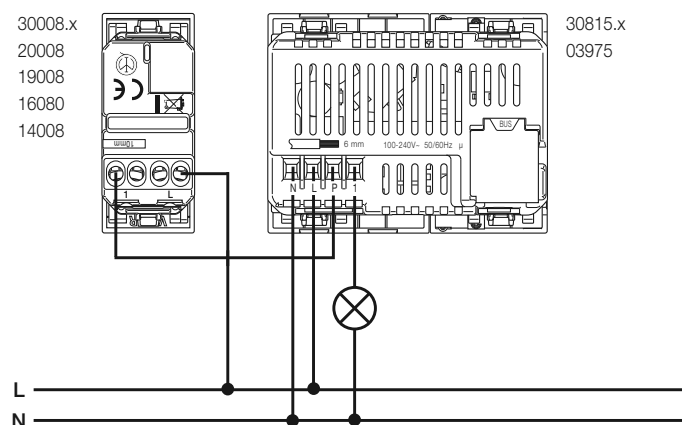
Configuration on View Wireless System: simultaneously press button G followed by button E for 5 s

Configuration on By-me Plus System: simultaneously press button G followed briefly by D

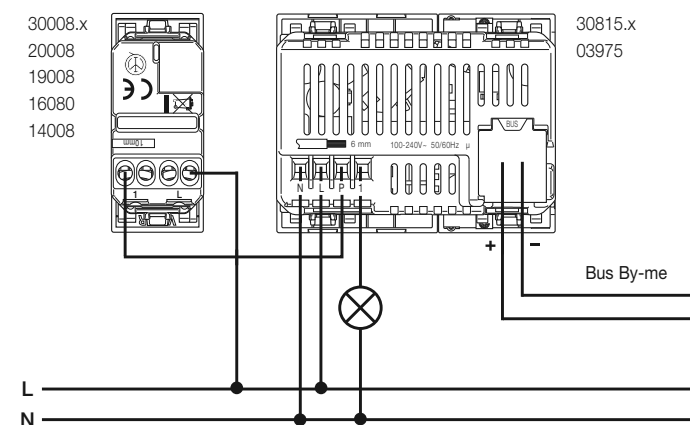
Voice control configuration: press button G for 5 s

N	Neutral
L	Phase
P	Input for connection to the remote wired push button
1	Relay output
I	By-me bus terminals

STAND ALONE CONNECTION AND WITH VIEW WIRELESS SYSTEM



CONNECTION WITH BY-ME PLUS SYSTEM



Caution: L and N must always be connected